



# Hanayashiki Golf Club Yokawa Course

Our Champion course where the JLPGA tour is held once every two years in April is attractive to all golfers.

Players from beginner to advanced can enjoy playing on the majestic and strategically fascinating hillside course.

Especially, the difficult 18th hole, where players must get the ball across a pond, is a famous challenge every golfers will want to experience.

All golf carts feature state-of-the-art “EAGLE VISION” golf navigation.

Our gorgeous Club House also welcome you.

At the restaurant with a panoramic view on the 4th floor, serving you a delicious food while looking out over the entire course.

A staff who speaks English is waiting for you to come to Japan. Please feel relaxed to come and enjoy discovering a whole new world.

Info: 🏠 534-1 Konishidani, Fukui, Yokawa-cho, Miki city, Hyogo

☎ +81-794-72-0111

🌐 <http://www.hanayashikigc.co.jp>

Area: 1.48 million m<sup>2</sup> Hole/Par: 18/72 Yards: 6,840y Course: Front 9, Back 9

Cart type: Electromagnetic induction type (with GPS navigation)

Play style: self-play or with caddie

Rental Equipments (Clubs & Shoes): Available from around JP¥4000

Breakfast: Available Public bath: Available Shop: Available

Practice areas: Bunker range / Putter practice area / Hitting practice area

Course snack shop: Staffed

Credit card: Acceptable

Play fee:

	18 Holes (Mon-Fri)	18 Holes (Sat-Sun & national holidays)	
<b>LOW</b> (Jan-Mar & Jul-Sep)	JP¥13060 JP¥18010	JP¥19000 JP¥23950	(self-play) (with caddie)
<b>HIGH</b> (Apr-Jun & Oct-Dec)	JP¥14250 JP¥19200	JP¥22500 JP¥27450	(self-play) (with caddie)

\*include tax

If you play a twosome, it cost you for extra fee.

Dress code: Members and guests are expected to adopt a standard of dress in keeping with a club of our standings.

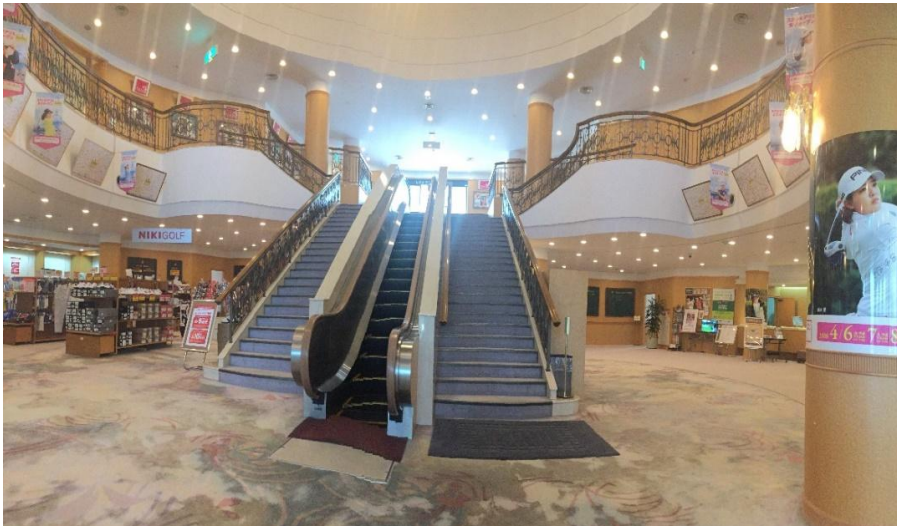
For men, a collared shirts must be worn with tailored pants and shorts and golf shoes.

For women, current golfing fashion is acceptable.

To book a reservation, please call Front office Wada Asami (+81-794-72-0151) or email to [wada@hanayashikigc.co.jp](mailto:wada@hanayashikigc.co.jp)



Club house



Entrance



Restaurant





From Restaurant



No.1 Spring season



No.18 Green